

AM-Target System

Low Cost - High Performance



A Portable target system for small arms live firing exercises, applicable for various types of weapons and ammunitions such as rifles, carbines, machine guns, and pistols. The targets are computerized controlled according to pre-defined programs. The system is designed for tropical climate, simple and easy to operate and assemble.



AM20

Wired Pop-up Target

- Electro-mechanical unit to raise and lower target silhouette.
- Hit detection rate up to 1000 counts/minute.
- Operate in 4 configurations: Pop-up, Side-up, Turn, and Swivel.
- Manual or pre-programmed electronics control via simple wiring.
- Specially designed for operations in tropical climate.
- Dust and waterproof casing, IP67.
- Lightweight. Easy to install. Easy to handle.

Approximate dimensions: 46cm x 58cm x 47cm (18" x 23" x 18")
Approximate weight: 25kg. (55lbs.)



AM40

Moving Target

- Steel movable trolley on dual rail made by stainless steel. The trolley is driven by cable and pulleys, with electrical brake.
- Space provided on the trolley to place AM20 or AM24.
- Pre-defined, user-selectable, running speeds from 5 to 30 km/h.
- Manual or pre-programmed electronics control via simple wiring.

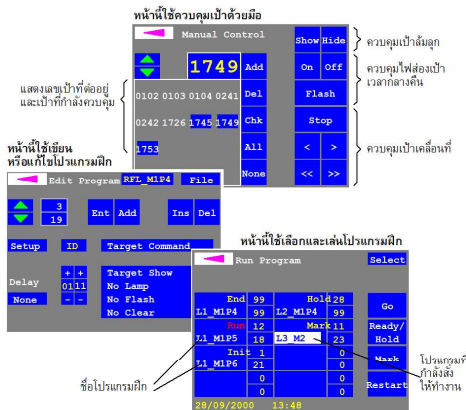
Approx. Trolley dimensions: 73cm x 120cm x 15cm (29" x 48" x 6")
Approx. Home unit dimensions: 75cm x 80cm x 60cm (30" x 32" x 24")
Rail width: 65cm (26"). Rail length: 18m (60') or upon request



AM100

Target Control Unit

- Control all operations of all targets, including accessories connected to the system.
- LCD touch screen control panel. Simple and user-friendly.
- Store up to 250 different preset scenarios.
- Control up to 100 pop-up and moving targets of all configurations.
- Control via simple wiring from a distance over 1000 meters.
- Display a selection of presentation time, delay, hit indication (number of hits and delay time), and hit result storing.
- Operate from internal rechargeable batteries, with internal 220V AC adapter and charger.
- A portable, ruggedized case.



Approximate dimensions: 28cm x 38cm x 22cm (11" x 15" x 9")
Approximate weight: 12kg. (26lbs.)



F11 & F12

Plastic Target Boards

- Plastic target silhouette to attach to target mechanisms.
- Made from nontoxic, recyclable, special plastic compound.
- Durable, lightweight and sturdy.
- Withstand strong wind and degradation from exposure to sunlight.
- 2 standard sizes (F11 & F12) with thickness of 3 mm.

Can be substituted with paper targets and wooden frames for cost savings.

Long F11: approx. dimensions and weight 129cm x 43cm; 1.5kg.
Short F12: approx. dimensions and weight 73cm x 45cm; 0.8kg.



Amornmas Co.,Ltd.
Tel: +66 2 3911873
www.amornmas.com

168 Soi Ekamai 14 Sukhumvit 63 Rd. Khlongton Nuea, Wattana, Bangkok 10110
Fax: +66 2 3812566 Line: @amornmastarget
Email: info@amornmas.com

อมรมาส
AMORNMAS